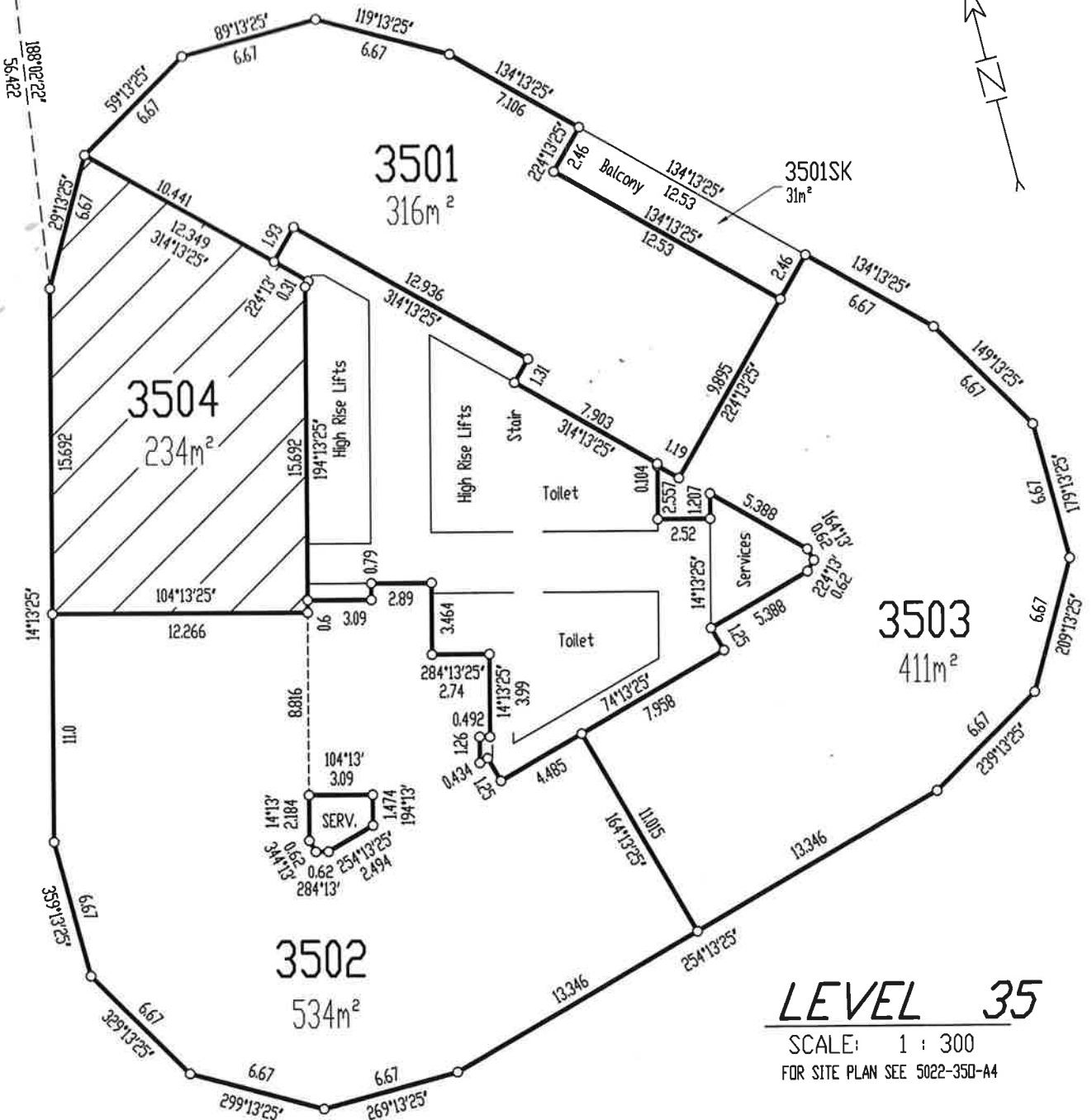
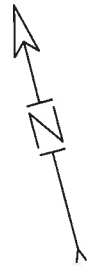


Note: Lease dimensions compiled from previous plan 5022-35L-A4 dated 12-03-05.



LEVEL 35

SCALE: 1 : 300
FOR SITE PLAN SEE 5022-350-A4

AMENDMENTS

- M-N 27-04-09 L.3501 & 3505 amalg.
- P-D 23-08-10 RP details updated

REFERENCE TO TITLE
50739946

VEKTA Pty Limited
ABN 41 138 024 754
630 Coronation Drive, Toowong
Ph: 3331 3000 Fax: 3217 7777

RIVERSIDE CENTRE

PLAN FOR LEASE PURPOSES
(Being Part of Level 35 of a 42 Storey Tower)
LEASES 3501 to 3504 IN LOT 123 ON SP208982

PARISH OF NORTH BRISBANE
COUNTY OF STANLEY
CITY OF BRISBANE

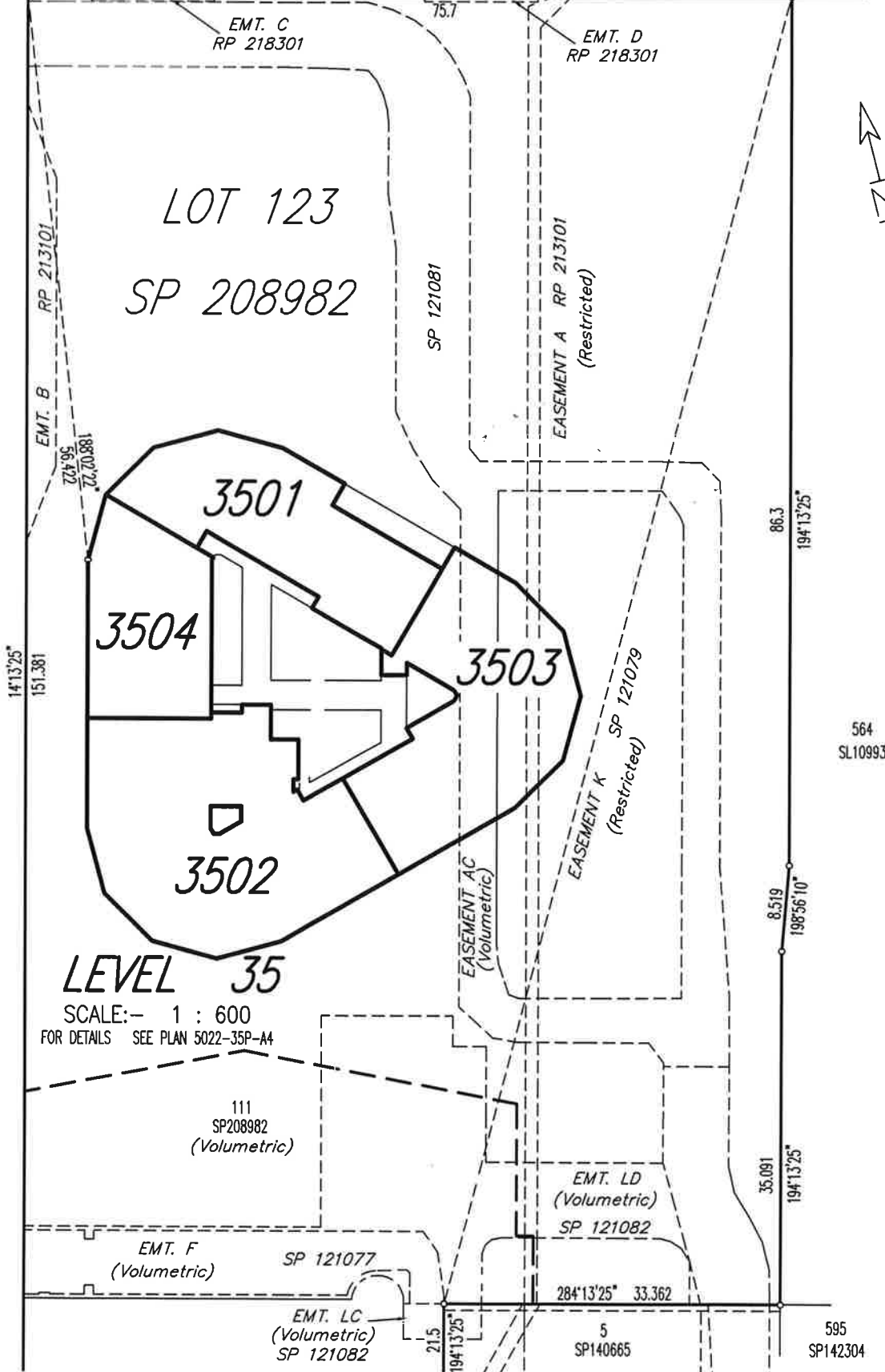
VEKTA Pty Limited
ABN 41 138 024 754, certify the details
shown on this sketch plan are correct.

Cadastral Surveyor/Director
Date 31/8/2010

NOTE - MEASUREMENTS ARE TO THE INSIDE FACE OF GLASS, THE OUTSIDE FACE OF SERVICE CORE WALLS, THE CENTRE OF DIVIDING PARTITIONS & THE CORRIDOR FACE OF CORRIDOR PARTITIONS (UNLESS OTHERWISE NOTED).

AREAS ARE TO THE NEAREST SQUARE METRE.

EAGLE STREET



LEVEL 35

SCALE:- 1 : 600
FOR DETAILS SEE PLAN 5022-35P-A4

RIVERSIDE CENTRE

PLAN FOR LEASE PURPOSES

(Being Part of Level 35 of a 42 Storey Tower)
LEASES 3501 to 3504 IN LOT 123 ON SP208982

PARISH OF NORTH BRISBANE
COUNTY OF STANLEY CITY OF BRISBANE

Comp. File: 5022-350-A4.dwg Job No: 50586

VEKTA Pty Limited
ABN 41 138 024 754, certify the details
shown on this sketch plan are correct.

[Signature]
Cadastral Surveyor/Director
Date 31/8/2010

PLAN 5022-350-A4

REFERENCE TO TITLE
50739946

VEKTA Pty Limited
ABN 41 138 024 754
630 Coronation Drive, Toowoong
Ph: 3331 3000 Fax: 3217 7777